

## Finite-temperature fidelity-metric approach to the Lipkin–Meshkov–Glick model

This article has been downloaded from IOPscience. Please scroll down to see the full text article.

2009 J. Phys. A: Math. Theor. 42 465304

(<http://iopscience.iop.org/1751-8121/42/46/465304>)

View [the table of contents for this issue](#), or go to the [journal homepage](#) for more

Download details:

IP Address: 171.66.16.156

The article was downloaded on 03/06/2010 at 08:22

Please note that [terms and conditions apply](#).

# Finite-temperature fidelity-metric approach to the Lipkin–Meshkov–Glick model

Daniel D Scherer<sup>1</sup>, Cord A Müller<sup>2</sup> and Michael Kastner<sup>3</sup>

<sup>1</sup> Theoretisch-Physikalisches Institut, Friedrich-Schiller-Universität Jena, 07743 Jena, Germany

<sup>2</sup> Physikalisches Institut, Universität Bayreuth, 95440 Bayreuth, Germany

<sup>3</sup> National Institute for Theoretical Physics (NITheP), Stellenbosch 7600, South Africa

E-mail: [daniel.scherer@uni-jena.de](mailto:daniel.scherer@uni-jena.de), [cord.mueller@uni-bayreuth.de](mailto:cord.mueller@uni-bayreuth.de) and [kastner@sun.ac.za](mailto:kastner@sun.ac.za)

Received 24 July 2009, in final form 18 September 2009

Published 22 October 2009

Online at [stacks.iop.org/JPhysA/42/465304](http://stacks.iop.org/JPhysA/42/465304)

## Abstract

The fidelity metric has recently been proposed as a useful and elegant approach to identify and characterize both quantum and classical phase transitions. We study this metric on the manifold of thermal states for the Lipkin–Meshkov–Glick (LMG) model. For the isotropic LMG model, we find that the metric reduces to a Fisher–Rao metric, reflecting an underlying classical probability distribution. Furthermore, this metric can be expressed in terms of derivatives of the free energy, indicating a relation to Ruppeiner geometry. This allows us to obtain exact expressions for the (suitably rescaled) metric in the thermodynamic limit. The phase transition of the isotropic LMG model is signalled by a degeneracy of this (improper) metric in the paramagnetic phase. Due to the integrability of the isotropic LMG model, ground-state level crossings occur, leading to an ill-defined fidelity metric at zero temperature.

PACS numbers: 05.70.Fh, 02.40.Ky, 64.70.Tg, 75.10.Jm

(Some figures in this article are in colour only in the electronic version)

## 1. Introduction

Beginning with the ground-state overlap studies of Zanardi and Paunković [1], the fidelity of quantum states has recently been used for investigating classical as well as quantum critical behaviour in various systems. The motivating idea behind this approach is simple, yet extremely plausible: the properties of different macroscopic phases of matter should be encoded in the structure of rather distinct quantum states. Hence, a suitable metric that can quantify how ‘different’ two given quantum states are should be able to capture some signature of a phase transition (see [2] for a recent review of these and related ideas).

The appeal of this approach lies in the fact that it is related to geometric structures inherent to the state space of the given quantum system itself. This was already pointed out in [3] for the case of pure quantum states, and a generalization of fidelity to finite temperatures was discussed in [4]. Fidelity itself and the corresponding geometric quantities might thus serve as ‘universal order parameters’ that reveal signatures of criticality at zero as well as finite temperatures. A related approach, proposing the use of the so-called fidelity susceptibility in order to identify and characterize quantum phase transitions, has recently been put forward by You *et al* [5].

A further interesting feature of the fidelity-metric approach lies in the fact that it also applies to non-standard (quantum) phase transitions, such as topologically ordered phases [6]. For such transitions, no symmetry breaking principles are at work, and no local order parameter can be defined. For current results on fidelity and fidelity metric approaches to topological order, see [7, 8].

In the present paper, we study the phase transition of the Lipkin–Meshkov–Glick (LMG) model within the fidelity-metric approach [9]. Originally, this model was proposed to describe excitations in simple atomic nuclei. In its spin-1/2 representation, it can be regarded as a quantum  $XY$  model with infinite-ranged ferromagnetic exchange interactions, where every spin is subject to an external transverse magnetic field  $h$ . This model shows a continuous phase transition from a symmetry-breaking, ferromagnetically ordered phase to a phase that is spin-polarized for zero temperature and high fields and crosses over continuously to a paramagnet at zero field and high temperature. We mostly study the isotropic case, being rotationally symmetric in the  $(x, y)$ -plane. This case is somewhat special due to the fact that the Hamiltonian consists of mutually commuting terms, and no ‘competition’ between noncommuting terms (regarding e.g. symmetry) can arise. Our aim is then to obtain the Riemannian metric tensor field related to fidelity, defined on the model’s quantum state space. As expected, we find in this metric a signature of the phase transition. The peculiarities of the isotropic LMG model lead to a number of remarkable properties of the metric: first, as a consequence of exact ground-state level crossings, the metric is not well defined on the ground-state manifold, i.e. at zero temperature. Second, for finite temperatures, we find a very pronounced signature at the phase boundary, with a well-defined Riemannian metric for the ferromagnetic phase, and a degenerate tensor field (not being a proper Riemannian metric) for the paramagnetic phase. Third, the metric components can be expressed entirely in terms of derivatives of the free energy, suggesting a close relation to Ruppeiner geometry [10]. These features should disappear for the anisotropic case, i.e. as soon as a noncommuting term is added to the Hamiltonian.

Studies of the phase transition of the LMG model within the framework of fidelity, fidelity susceptibility and related concepts have been reported previously. In [11], fidelity was used basically as an alternative means to obtain the phase diagram, whereas in [12] the fidelity susceptibility and its scaling behaviour were studied (see also [13] and [14] for related work). Yet, to our knowledge, the explicit calculation of the associated metric tensor field at finite temperatures is novel.

The paper is structured as follows: in sections 2 and 3 we give an overview of the quantum state space and its underlying geometric structures. This will lead us to the concepts of Fubini–Study geometry in the case of pure states and Bures geometry for mixed states. In section 4 we introduce the isotropic LMG model, its simple solution in terms of angular momentum states and its exact thermodynamic solution. Section 5 is devoted to the computation of the fidelity metric induced on thermal submanifolds and the Ricci scalar. The Fubini–Study limit is discussed in section 6, and remarks on the anisotropic LMG model can be found in section 7. A discussion of the results and an outlook on future work is given in section 8.

## 2. Fubini–Study geometry on the quantum state space $\mathcal{P}(\mathcal{H})$

In this section we introduce a Riemannian metric on the quantum state space which serves as a measure of distinguishability of quantum states. As a first step, following [15], we will introduce the quantum state space as a base manifold of a certain fibre bundle. Then there exists a very natural (from a mathematical point of view) way to derive a metric on the quantum state space from the scalar product on the Hilbert space. Remarkably, this metric has an information-geometric interpretation, rendering it a useful measure of distinguishability of quantum states.

Consider a quantum system defined on a Hilbert space  $\mathcal{H}$ . We denote by

$$S(\mathcal{H}) \equiv \{|\psi\rangle \in \mathcal{H} \mid \langle\psi|\psi\rangle = 1\} \subset \mathcal{H} \quad (1)$$

the subset of normalized Hilbert space vectors. Then it is well known that the relevant physical information is contained in the transition probabilities  $|\langle\psi|\varphi\rangle|^2$ , where  $|\psi\rangle, |\varphi\rangle \in S(\mathcal{H})$ . However,  $S(\mathcal{H})$  contains redundant state vectors, and therefore is not what we would like to call the quantum state space: for a phase-shifted Hilbert-space vector

$$|\psi'\rangle \equiv e^{i\theta}|\psi\rangle, \quad (2)$$

it is obvious that  $|\langle\psi'|\varphi\rangle|^2 = |\langle\psi|\varphi\rangle|^2$ , and  $|\psi\rangle$  and  $|\psi'\rangle$  cannot be distinguished by measuring expectation values of any observable acting on  $\mathcal{H}$  alone. Putting it less mundane, the invariance of transition probabilities under these  $U(1)$  transformations induces an equivalence relation  $|\psi\rangle \sim |\psi'\rangle$  on  $S(\mathcal{H})$ . We denote by  $[\psi] \in \mathcal{P}(\mathcal{H})$  the corresponding equivalence classes, where the projective Hilbert space  $\mathcal{P}(\mathcal{H})$  is the space of equivalence classes. The projective Hilbert space now defines our first version of a quantum state space. Note that, for finite-dimensional Hilbert spaces  $\mathcal{H} = \mathbb{C}^N$ , the projective Hilbert space  $\mathcal{P}(\mathcal{H}) \cong \mathbb{C}P^{N-1}$  is a complex projective space, which is well studied in geometry. The projection mapping

$$\pi : S(\mathcal{H}) \rightarrow \mathcal{P}(\mathcal{H}), \quad |\psi\rangle \mapsto [\psi], \quad (3)$$

allows for a fibre bundle interpretation:  $S(\mathcal{H}) \xrightarrow{\pi} \mathcal{P}(\mathcal{H})$  is a principal fibre bundle with the structure group  $U(1)$  and quantum state space  $\mathcal{P}(\mathcal{H})$  as its base space. The fibres  $\pi^{-1}([\psi])$  are one-dimensional subspaces of  $\mathcal{H}$  and are themselves isomorphic to  $U(1)$ . Note that  $\mathcal{P}(\mathcal{H})$  is isomorphic to the space of one-dimensional projectors of the form  $|\psi\rangle\langle\psi|$ .

The Hilbert space  $\mathcal{H}$  possesses a geometric structure that originates from its scalar product in a straightforward way:

$$\langle\psi|\varphi\rangle \equiv G(\psi, \varphi) + i\Omega(\psi, \varphi). \quad (4)$$

Here,  $G(\psi, \varphi)$  and  $\Omega(\psi, \varphi)$  are defined as the real, respectively imaginary, part of  $\langle\psi|\varphi\rangle$ .  $G : \mathcal{H} \times \mathcal{H} \rightarrow \mathbb{R}$  is a bilinear, non-degenerate and symmetric map. Due to linearity of the Hilbert space  $\mathcal{H}$ , we can identify its tangent space  $T_\psi\mathcal{H}$  at a point  $|\psi\rangle$  with  $\mathcal{H}$  itself,  $T_\psi\mathcal{H} \cong \mathcal{H}$ . Thus,  $G$  can also be seen as a mapping from  $T\mathcal{H} \times T\mathcal{H}$  to the reals, and indeed defines a Riemannian structure on the Hilbert space  $\mathcal{H}$ . Similarly,  $\Omega : \mathcal{H} \times \mathcal{H} \rightarrow \mathbb{R}$  defines a symplectic form on  $\mathcal{H}$ , and together with  $G$  it endows  $\mathcal{H}$  with a Kählerian structure. The interested readers can find more information on these geometric structures and their implications for quantum mechanics in [15, 16]. In the present paper, we will be concerned exclusively with the properties of the Riemannian metric  $G$ .

Our next aim is to carry over the Riemannian structure from  $S(\mathcal{H})$  to the quantum state space  $\mathcal{P}(\mathcal{H})$ . Clearly, the Riemannian metric defined in (4) is not invariant under the  $U(1)$  phase rotation (2). But the metric structure in the projective space of equivalence classes cannot depend on these phases and should be defined accordingly. Here the bundle

structure  $S(\mathcal{H}) \xrightarrow{\pi} \mathcal{P}(\mathcal{H})$  comes in handy. A connection on a fibre bundle introduces the notions of vertical ( $\in V_\psi$ ) and horizontal vectors ( $\in H_\psi$ ). Vertical vectors ‘point along’ the fibre direction and are elements of the tangent spaces to the points in  $\pi^{-1}([\psi])$ . So given a curve  $(-\epsilon, +\epsilon) \ni t \mapsto e^{i\theta(t)}|\psi\rangle, \theta(0) = 0$  along the fibre  $\pi^{-1}([\psi])$ , the tangent vector  $\frac{d}{dt}(e^{i\theta(t)}|\psi\rangle)|_{t=0} = i\dot{\theta}(0)|\psi\rangle$  at the point  $|\psi\rangle$  spans the vertical vector space  $V_\psi \cong i\mathbb{R}$ . To describe the connection in terms of a 1-form, we can naturally make use of the Hilbert-space scalar product. Take as this natural connection  $\langle\psi|\cdot\rangle : T_\psi S(\mathcal{H}) \rightarrow \mathbb{C}$ . Then the horizontal tangent space at a point  $|\psi\rangle \in S(\mathcal{H})$  is given by those vectors which are mapped to zero by this connection:

$$H_\psi \equiv \{|\varphi\rangle \in T_\psi S(\mathcal{H}) | \langle\psi|\varphi\rangle = 0\}. \quad (5)$$

This is precisely the orthogonal complement to  $|\psi\rangle$  in  $S(\mathcal{H})$ , yielding the decomposition

$$T_\psi S(\mathcal{H}) = H_\psi \oplus V_\psi \quad (6)$$

of tangent spaces of  $S(\mathcal{H})$ . An element  $|\varphi^H\rangle \in H_\psi$  can now be written as

$$|\varphi^H\rangle = |\varphi\rangle - \langle\psi|\varphi\rangle|\psi\rangle. \quad (7)$$

This enables us to define a bilinear mapping

$$\langle\cdot|\cdot\rangle_{[\psi]} : T_{[\psi]}\mathcal{P}(\mathcal{H}) \times T_{[\psi]}\mathcal{P}(\mathcal{H}) \rightarrow \mathbb{C} \quad (8)$$

on the tangent spaces  $T_{[\psi]}\mathcal{P}(\mathcal{H})$  of  $\mathcal{P}(\mathcal{H})$  as

$$\langle P_1 | P_2 \rangle_{[\psi]} \equiv \langle \varphi_1^H | \varphi_2^H \rangle. \quad (9)$$

Here,  $|\varphi_1^H\rangle, |\varphi_2^H\rangle$  are vectors which are pushed forward to  $P_1, P_2 \in T_{[\psi]}\mathcal{P}(\mathcal{H})$  by the tangent projection  $\pi_* : T_\psi S(\mathcal{H}) \rightarrow T_{[\psi]}\mathcal{P}(\mathcal{H})$  that gives the tangent vectors to the projected curves  $\pi(|\varphi(t)\rangle)$  in the base space  $\mathcal{P}(\mathcal{H})$ . Equation (9) can also be written as

$$\langle P_1 | P_2 \rangle_{[\psi]} = \langle \varphi_1 | \varphi_2 \rangle - \langle \varphi_1 | \psi \rangle \langle \psi | \varphi_2 \rangle. \quad (10)$$

This object is often referred to as the quantum geometric tensor [17]. By construction, it is invariant under the  $U(1)$  transformation introduced above.

Taking the real part on both sides of equation (10), we can now define

$$g(P_1, P_2) \equiv \Re\{\langle P_1 | P_2 \rangle_{[\psi]}\} = G(\varphi_1^H, \varphi_2^H) \quad (11)$$

as a Riemannian metric on the projective Hilbert space. For explicit calculations, it proves useful to rewrite  $g$  by employing a local section  $\mathcal{P}(\mathcal{H}) \rightarrow S(\mathcal{H}), [\psi] \mapsto |\psi\rangle$ . This section induces a push forward

$$T_{[\psi]}\mathcal{P}(\mathcal{H}) \rightarrow T_\psi S(\mathcal{H}), \quad P \mapsto |d\psi(P)\rangle, \quad (12)$$

which allows us to write  $|\varphi\rangle = |d\psi(P)\rangle$ . Finally, we obtain

$$g(P_1, P_2) = \Re\{\langle d\psi(P_1) | d\psi(P_2) \rangle - \langle d\psi(P_1) | \psi \rangle \langle \psi | d\psi(P_2) \rangle\}. \quad (13)$$

This Riemannian metric is usually called the Fubini–Study metric. Remarkably, one finds that the distance corresponding to this metric is a distance in the information-geometric sense, telling how ‘difficult’ it is to distinguish between certain states by means of ideal measurements (see [18] for details). This metric is useful for studying quantum phase transitions at zero temperature, where only pure quantum states need to be considered.

### 3. Bures geometry on the quantum state space $\mathcal{M}$

For the study of thermal phase transitions, we have to extend the fidelity metric to mixed states, i.e. to the space of density operators. This formalism is mostly due to Uhlmann [19]; the presentation in this paper mainly follows [15].

Let  $\mathcal{M}$  denote the set of density operators, which defines our second version of a quantum state space. First note that  $\mathcal{P}(\mathcal{H}) \subset \mathcal{M}$ , since we have an isomorphism  $|\psi\rangle \mapsto |\psi\rangle\langle\psi|$  for pure states. For mixed states, one can identify a fibre bundle structure by observing that any density operator can be written as  $\rho = WW^\dagger$ . The so-called purification  $W \in S(\mathcal{H}^{\text{HS}})$  is an element of

$$S(\mathcal{H}^{\text{HS}}) \equiv \{W \in \mathcal{H}^{\text{HS}} \mid \|W\|_{\text{HS}} = 1\}, \quad (14)$$

the Hilbert–Schmidt space of bounded operators  $W : \mathcal{H} \rightarrow \mathcal{H}$  with the unit norm  $\|W\|_{\text{HS}} \equiv \sqrt{\langle W, W \rangle_{\text{HS}}}$  that is derived from the scalar product

$$\langle W_1, W_2 \rangle_{\text{HS}} \equiv \text{tr } W_1^\dagger W_2. \quad (15)$$

Now, what is this construction good for, and where is the bundle? The purification of a given density operator is not unique since, if  $W : \mathcal{H} \rightarrow \mathcal{H}$  defines a purification, then  $WV$  with  $V \in U(\mathcal{H})$  purifies  $\rho$  as well. Here,  $U(\mathcal{H})$  denotes the group of unitary operators acting on the Hilbert space  $\mathcal{H}$ . So instead of considering equivalence classes over just the pure-state phases  $U(1)$ , we now introduce a projection mapping  $\pi : S(\mathcal{H}^{\text{HS}}) \rightarrow \mathcal{M}$  by  $W \mapsto \rho = WW^\dagger$ .

There is still a slightly technical obstruction to obtaining a well-defined  $U(\mathcal{H})$  bundle. For general density operators, the ‘fibres’  $\pi^{-1}(\rho)$  need not be isomorphic to each other and  $U(\mathcal{H})$ . This can be seen as follows. A general density matrix is by definition a positive operator and can accordingly have null eigenvalues. Consequently, an operator  $W$  projected to a given  $\rho$  is not necessarily of full rank. Moreover, if  $W_1$  and  $W_2$  are projected to  $\rho_1$  and  $\rho_2$ , respectively, they can differ in rank. Hence, in the presence of null eigenvalues of  $\rho$ , we can expect a one-to-one correspondence for the elements of  $\pi^{-1}(\rho)$  only to a *subgroup* of  $U(\mathcal{H})$ . Therefore, in order to obtain a well-defined  $U(\mathcal{H})$  bundle with all fibres isomorphic to  $U(\mathcal{H})$ , we need to restrict the base space to strictly positive operators (only non-null eigenvalues),

$$\mathcal{M}^+ \equiv \{\rho \in \mathcal{M} \mid \rho > 0\}. \quad (16)$$

Now we need a subspace  $S(\widetilde{\mathcal{H}}^{\text{HS}}) \subset S(\mathcal{H}^{\text{HS}})$  which projects to  $\mathcal{M}^+$  under  $\pi$ . We find this subspace to be

$$S(\widetilde{\mathcal{H}}^{\text{HS}}) \equiv \{W \in S(\mathcal{H}^{\text{HS}}) \mid \text{Ker}(W) = 0\}. \quad (17)$$

Among others, we just excluded the projective Hilbert space from  $\mathcal{M}^+$ . But it turns out that, once the metric tensor field we are interested in has been derived on  $\mathcal{M}^+$ , it can be extended to equip the entire quantum state space  $\mathcal{M}$  with a Riemannian metric [20].

To obtain the decomposition into horizontal tangent spaces  $H_W$  and vertical tangent spaces  $V_W$ ,  $T_W S(\widetilde{\mathcal{H}}^{\text{HS}}) = H_W \oplus V_W$ , we can again introduce a connection to the  $U(\mathcal{H})$  bundle  $S(\widetilde{\mathcal{H}}^{\text{HS}}) \xrightarrow{\pi} \mathcal{M}^+$  using the scalar product on Hilbert–Schmidt space. Note that the tangent spaces  $T_W S(\mathcal{H}^{\text{HS}})$  at a point  $W \in S(\mathcal{H}^{\text{HS}})$  can be identified with subspaces of  $\mathcal{H}^{\text{HS}}$  due to the Hilbert-space property of  $\mathcal{H}^{\text{HS}}$ . For the push forward of a vector  $X \in T_W S(\widetilde{\mathcal{H}}^{\text{HS}})$  we obtain

$$\pi_*(X) = WX^\dagger + XW^\dagger \in T_{WW^\dagger} \mathcal{M}^+. \quad (18)$$

Since  $\pi$  eliminates all the vertical directions, a vector  $Y$  is vertical if

$$WY^\dagger + YW^\dagger = 0. \quad (19)$$

For horizontality of  $X$ , we thus require  $\langle X, Y \rangle_{\text{HS}} = 0$  to hold for all vertical vectors  $Y \in V_W$ . This leads to the condition

$$X^\dagger W - W X^\dagger = 0. \quad (20)$$

Note that  $X$ , being a tangent vector to the point  $W$ , can equivalently be written as  $\frac{d}{dt} W(t)|_{t=0}$  for some curve  $W(t)$ ,  $W(0) = W$ . Then, following [21, 22], one can show that the ansatz  $dW = G W$ , with  $G$  a hermitian matrix-valued 1-form, solves equation (20). For the 1-form  $d\rho$ , defined as the exterior derivative of the density matrix  $\rho = W W^\dagger$ , this translates into

$$d\rho = \rho G + G \rho. \quad (21)$$

If we now define a metric tensor field on the tangent spaces of  $\mathcal{M}^+$  by taking, again, the real part of the scalar product and admitting only horizontal vectors as arguments, we obtain the so-called Bures metric

$$g(P_1, P_2) \equiv \Re\{\langle X_1^H, X_2^H \rangle_{\text{HS}}\} = \frac{1}{2} \text{tr} d\rho \otimes G(P_1, P_2), \quad (22)$$

with  $P_1 = \pi_*(X_1^H)$ ,  $P_2 = \pi_*(X_2^H)$ . Solving equation (21) for the matrix elements of  $G$  and using a spectral resolution of the identity operator  $1 = \sum_n |\psi_n\rangle\langle\psi_n|$  in terms of the eigenvectors of the density operator  $\rho$ , one obtains

$$g = \frac{1}{2} \sum_{n,m} \frac{\langle\psi_n| d\rho|\psi_m\rangle \otimes \langle\psi_m| d\rho|\psi_n\rangle}{p_n + p_m} \quad (23)$$

for the metric tensor field, which was first found by Hübner [23].  $p_n$  are the eigenvalues of the density operator  $\rho$ , which can be interpreted as statistical weights. In [24], by expanding  $d\rho$  in terms of the eigenstates of  $\rho$ , equation (23) is taken as a starting point for decomposing  $g$  into two parts,

$$g = g^{\text{cl}} + g^{\text{nc}}, \quad (24)$$

with

$$g^{\text{cl}} \equiv \frac{1}{4} \sum_n \frac{1}{\sqrt{p_n}} dp_n \otimes \frac{1}{\sqrt{p_n}} dp_n \quad (25)$$

and

$$g^{\text{nc}} \equiv \frac{1}{2} \sum_{n,m} \frac{(p_n - p_m)^2}{p_n + p_m} \langle\psi_n| d\psi_m\rangle \otimes \langle d\psi_m|\psi_n\rangle. \quad (26)$$

The so-called classical (cl) contribution  $g^{\text{cl}}$  formally coincides with the Fisher–Rao metric of classical information geometry [24].  $g^{\text{nc}}$ , in contrast, was dubbed the non-classical (nc) contribution. In [24] it was also shown that the Bures metric indeed reduces to the Fubini–Study metric for pure states.

As a last step, we need to argue that the Bures metric defined on  $\mathcal{M}^+$  can be extended to  $\mathcal{M}$ : an explicit calculation for finite systems reveals that the subspaces corresponding to zero-eigenvalues do not contribute to the trace operation which finally yields the distance between two density operators. Hence, equations (25) and (26) can be continued to  $\mathcal{M}$  without modifications, and we have successfully constructed a fidelity metric on the quantum state space  $\mathcal{M}$ . The two expressions (25) and (26) form the starting point for our discussion of phase transitions at finite temperature and their relation to the Riemannian structure of the quantum state space.

#### 4. Isotropic LMG model

In this section we introduce the Lipkin–Meshkov–Glick (LMG) model in its spin formulation and give some of its basic properties, following mainly the presentation in [25]. We then specialize to the isotropic case which is exactly solvable with little effort even in the case of finite systems and shortly report on its ground-state structure. Finally, the exact thermodynamic solution is recalled.

The LMG model describes  $N$  spin-1/2 degrees of freedom residing on the vertices of a graph. The spins interact through a ferromagnetic exchange coupling of infinite range, i.e. all spin pairs interact with equal strength:

$$\mathcal{H}_{\text{LMG}} = -\frac{1}{N} \sum_{i < j} \sigma_i^\dagger \mathcal{C} \sigma_j - h \sum_i \sigma_i^z, \quad (27)$$

where

$$\sigma_i = (\sigma_i^x, \sigma_i^y, \sigma_i^z)^t, \quad \sigma_i^\dagger = (\sigma_i^x, \sigma_i^y, \sigma_i^z). \quad (28)$$

Here,  $i, j$  label the graph vertices and  $\sigma_i$  denotes the vector of Pauli matrices acting on the Hilbert subspace  $\mathcal{H}_i \cong \mathbb{C}^2$  corresponding to each vertex. The Pauli-vector components satisfy  $[\sigma_i^\mu, \sigma_j^\nu] = 2i \delta_{ij} \epsilon_{\mu\nu\kappa} \sigma_j^\kappa$ , where we used Greek indices to label spatial vector components. The full Hilbert space is given by the tensor product

$$\mathcal{H} = \bigotimes_{i=1}^N \mathcal{H}_i \cong (\mathbb{C}^2)^{\otimes N}. \quad (29)$$

The coupling matrix  $\mathcal{C}$  in (27) is given by  $\mathcal{C} = \text{diag}(1, \gamma, 0)$ , with anisotropy parameter  $\gamma$ . A factor of  $1/N$  is included in (27) to ensure a finite free energy per degree of freedom when taking the thermodynamic limit. Moreover, an external magnetic field of strength  $h$ , pointing in the  $z$ -direction, tries to align the spins along this direction.

The model dynamics can be formulated entirely in terms of the total spin

$$\mathbf{S} = \frac{1}{2} \sum_{i=1}^N \sigma_i. \quad (30)$$

Its components obey the usual angular momentum commutation relations  $[S_\mu, S_\nu] = i \epsilon_{\mu\nu\kappa} S_\kappa$ , yielding  $[S^2, S_\mu] = 0$  for all  $\mu$ . Introducing spin-raising and -lowering operators  $S_\pm = (S_x \pm iS_y)/2$ , the Hamiltonian can be rewritten as

$$\mathcal{H}_{\text{LMG}} = -\frac{1+\gamma}{N} \left( \mathbf{S}^2 - S_z^2 - \frac{N}{2} \right) - 2hS_z - \frac{1-\gamma}{2N} (S_+^2 + S_-^2). \quad (31)$$

Since  $[\mathbf{S}^2, \mathcal{H}_{\text{LMG}}] = 0$ ,  $\mathbf{S}^2$  is a conserved quantity under the dynamics induced by  $\mathcal{H}_{\text{LMG}}$ . Thus, the Hilbert space can be decomposed as

$$\mathcal{H} \cong (\mathbb{C}^2)^{\otimes N} \cong \bigoplus_S d_S \mathcal{D}_S, \quad (32)$$

where  $d_S$  denote the multiplicities of irreducible and unitary  $SU(2)$ -representations  $\mathcal{D}_S$  of dimension  $\dim \mathcal{D}_S = 2S + 1$ . For convenience, we choose  $N$  even in the following, obtaining  $S \in \{0, \dots, N/2\}$ . Moreover, the Hamiltonian is invariant under time reversal ( $h \mapsto -h, \boldsymbol{\sigma} \mapsto -\boldsymbol{\sigma}$ ). Therefore, all eigenvalues are at least twice degenerate (Kramers degeneracy),  $E_n(h) = E_{n'}(-h)$ , where  $n$  and  $n'$  denote distinct sets of quantum numbers. Due to this symmetry, we can restrict the discussion of the spectral properties of  $\mathcal{H}_{\text{LMG}}$  to the case



$h \geq 0$ . We now specialize to the isotropic model, and comment on the anisotropic case in section 7. The Hamiltonian (31) reduces in the isotropic case  $\gamma = 1$  to

$$\mathcal{H}_{\text{LMG}}^{\text{iso}} = -\frac{2}{N} \left( S^2 - S_z^2 - \frac{N}{2} \right) - 2hS_z. \quad (33)$$

Since  $[S_z, \mathcal{H}_{\text{LMG}}^{\text{iso}}] = 0$ , now also  $S_z$  is an integral of motion. We denote by  $|SM\rangle$  the simultaneous eigenstates of  $S^2$  and  $S_z$ , where

$$S^2|SM\rangle = S(S+1)|SM\rangle, \quad S_z|SM\rangle = M|SM\rangle. \quad (34)$$

For every spin sector  $\mathcal{D}_S$ , the angular momentum eigenstates  $|SM\rangle$ ,  $M = -S, \dots, +S$ , are eigenstates of the Hamiltonian, and  $\mathcal{H}_{\text{LMG}}^{\text{iso}}$  is invariant under rotations about the  $z$ -axis. Its eigenvalues are given by

$$E_{SM} = -\frac{2}{N} \left( S(S+1) - M^2 - \frac{N}{2} \right) - 2hM. \quad (35)$$

$E_{SM}$  attains its minimum in the maximum-spin sector (i.e. for quantum number  $S_0 = N/2$ ) with the magnetic quantum number

$$M_0 = \begin{cases} \mathcal{I}(hN/2) & \text{for } 0 \leq h < 1, \\ N/2 & \text{for } h \geq 1, \end{cases} \quad (36)$$

where

$$\mathcal{I}(x) = \begin{cases} \lfloor x \rfloor & \text{for } x = \lfloor x \rfloor + \delta, \delta \in [0, 1/2), \\ \lceil x \rceil & \text{for } x = \lfloor x \rfloor + \delta, \delta \in [1/2, 1) \end{cases} \quad (37)$$

is the rounding function. The value of the external field  $h$  therefore determines which of the angular momentum states  $\in \mathcal{D}_{N/2}$  is selected as the ground state. At certain values of  $h$  the ground state switches from one  $M$ -value to another (see equation 36), and these points of degeneracy are termed level crossings. In the thermodynamic limit  $N \rightarrow \infty$ , the ground-state energy per spin converges towards a continuous function of  $h$  [25], being infinitely differentiable almost everywhere. Only at  $h = h_c|_{T=0} \equiv \pm 1$  its second derivative with respect to  $h$  is discontinuous, signalling the above-mentioned phase transitions.

We now recall the exact thermodynamic solution of the LMG model, which is a special case of a result by Pearce and Thompson [26] obtained for a large class of mean-field type spin models in an external field. For the isotropic LMG model, the free energy per spin in the thermodynamic limit  $N \rightarrow \infty$  is given by

$$f(\beta, h) \equiv -\lim_{N \rightarrow \infty} \frac{1}{N\beta} \ln \text{tr} \exp(-\beta \mathcal{H}_{\text{LMG}}^{\text{iso}}) = \frac{1}{2} \mu_{xy}^2 - \beta^{-1} \ln(2 \cosh(\beta \sqrt{\mu_{xy}^2 + h^2})), \quad (38)$$

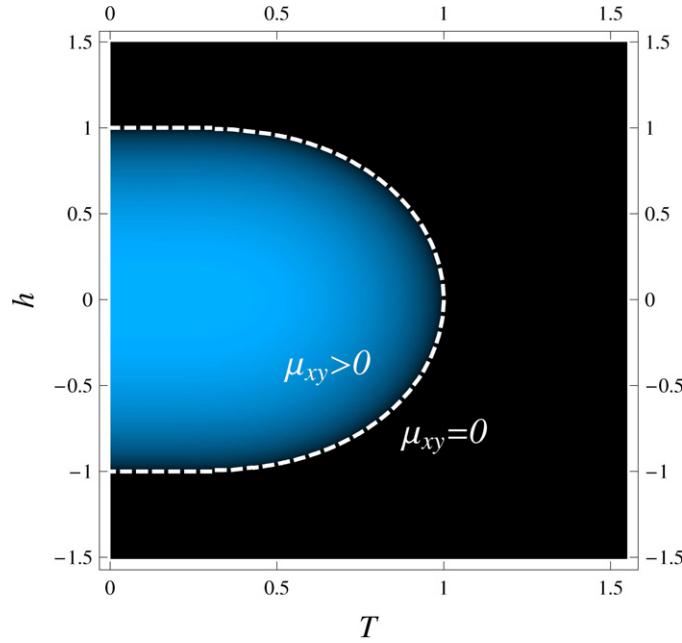
where  $\beta$  denotes the inverse temperature. The relative magnetization in the  $z$ -direction,  $\mu_z = -\partial f / \partial h$ , is completely determined by the value of the external field  $h$  and the scalar-order parameter  $\mu_{xy} = \mu_{xy}(\beta, h)$ . The latter obeys the self-consistency equation

$$\mu_{xy}^2 + h^2 = (\tanh(\beta \sqrt{\mu_{xy}^2 + h^2}))^2 \quad (39)$$

and has the interpretation of a relative in-plane magnetization with respect to the maximum total spin  $N/2$ :

$$\mu_{xy}^2 = \lim_{N \rightarrow \infty} \frac{2}{N^2} \left\langle \left( \sum_i \sigma_i^x \right)^2 + \left( \sum_i \sigma_i^y \right)^2 \right\rangle \quad (40)$$

where  $\langle \cdot \rangle$  denotes a thermal-equilibrium average.



**Figure 1.** Phase diagram of the isotropic LMG model plotted in the  $(T, h)$ -plane. The blue shaded area marks the ordered phase with finite in-plane magnetization  $\mu_{xy} \neq 0$ , separated from the paramagnetic phase  $\mu_{xy} = 0$  (shown in black) by a line of phase transitions making up the phase boundary (dashed white).

The self-consistency equation (39) determines the phase diagram completely, see figure 1. For fields with  $|h| < 1$  and temperatures  $T$  below the critical temperature  $T_c(h)$ ,  $\mu_{xy}$  takes non-zero values and vanishes continuously when approaching the phase boundary by either an increase in temperature or magnetic field. The phase boundary reached as  $\mu_{xy} = 0$  consists of all points  $(\beta_c, h_c)$  that obey  $h_c = \tanh(\beta_c h_c)$  or

$$\beta_c(h_c) = h_c^{-1} \operatorname{arctanh}(h_c), \tag{41}$$

where  $\beta_c = 1/T_c$  and  $h_c$  denote critical values of inverse temperature and magnetic field. In summary, the LMG model shows a ferromagnetically ordered phase separated from a paramagnetic phase by a line of continuous phase transitions. All these exact thermodynamic results for the infinite system coincide with results obtained from a mean-field treatment as reported in [11] and [27].

### 5. Metric tensor field for thermal states

In this section we compute the metric tensor field on the submanifold of thermal states. A thermal equilibrium state (or Gibbs state) of the isotropic LMG model is given by

$$\rho = \frac{1}{\mathcal{Z}_N(\beta, h)} \exp(-\beta \mathcal{H}_{\text{LMG}}^{\text{iso}}), \tag{42}$$

where

$$\mathcal{Z}_N(\beta, h) = \sum_{S=0}^{N/2} d_S \sum_{M=-S}^{+S} \langle SM | e^{-\beta(-\frac{2}{N}(S^2 - S_z^2 - \frac{N}{2}) - 2hS_z)} | SM \rangle \tag{43}$$

is the canonical partition function. Here, the density operator inherits a dependence on  $\beta$  and  $h$  from the Hamiltonian and the partition function.

For finite systems, equation (42) defines a parameterization of the submanifold  $\mathcal{G}$  of thermal states. Equivalently, we can take this as a trivial chart  $\rho(\beta, h) \mapsto (\beta, h)$ , defining local coordinates on  $\mathcal{G}$ . Vector fields (and, analogously, 1-forms or higher rank tensor fields) can then be expressed with respect to the coordinate basis  $\{\partial_\beta, \partial_h\}$ .

As a first step, we use the decomposition  $\mathcal{H} \cong \bigoplus_S d_S \mathcal{D}_S$  of the Hilbert space of the LMG model to cast the spectral representation of  $g$  (equations (24)–(26)) in a different form: we solve equation (21), separately within every spin sector  $\mathcal{D}_S$ , for the matrix elements of  $G$  with respect to the  $(2S + 1)$ -dimensional basis  $\{|SM\rangle\}$ . Plugging the result into equation (22) and taking the trace, we arrive at the expressions

$$g^{\text{cl}} = \frac{1}{4} \sum_S d_S \sum_M \frac{1}{\sqrt{p_{SM}}} dp_{SM} \otimes \frac{1}{\sqrt{p_{SM}}} dp_{SM} \quad (44)$$

and

$$g^{\text{nc}} = \frac{1}{2} \sum_S d_S \sum_{M, M'} \frac{(p_{SM} - p_{SM'})^2}{p_{SM} + p_{SM'}} \langle SM | d | SM' \rangle \otimes \langle SM | d | SM' \rangle^* = 0. \quad (45)$$

Here, by

$$p_{SM} = \frac{1}{Z_N} \exp(-\beta E_{SM}) \quad (46)$$

we denote the statistical weights with energies  $E_{SM}$  as given in (35). Since the eigenstates of  $\mathcal{H}_{\text{LMG}}^{\text{iso}}$  do not carry any explicit  $h$ -dependence (nor, of course, any  $\beta$ -dependence), the non-classical contribution  $g^{\text{nc}}$  vanishes by virtue of  $d|SM\rangle = 0$ , and we are left with the classical Fisher–Rao contribution (44). This is maybe not too surprising: since the operators  $S^2, S_z$  in the Hamiltonian of the isotropic LMG model are commuting, a (classical) probability distribution can be assigned, and the corresponding information geometrical metric is known to be the one of Fisher–Rao. A more detailed and more general discussion of Hamiltonians consisting of commuting summands and the implications on the fidelity can be found in [28].

It is straightforward to compute the 1-forms  $dp_{SM}$  in equation (44) with respect to the dual coordinate basis  $d\beta, dh$ , yielding

$$dp_{SM} = \partial_\beta p_{SM} d\beta + \partial_h p_{SM} dh, \quad (47)$$

where the partial derivatives can be rewritten as

$$\partial_\beta p_{SM} = p_{SM} (\langle \mathcal{H}_{\text{LMG}}^{\text{iso}} \rangle - E_{SM}), \quad (48a)$$

$$\partial_h p_{SM} = -2\beta p_{SM} (\langle S_z \rangle - M). \quad (48b)$$

Expanding the metric tensor field with respect to the rank-two tensor basis  $d\beta \otimes d\beta, d\beta \otimes dh$ , etc, we obtain

$$g_{\beta\beta} \equiv \frac{1}{4} \sum_S d_S \sum_M \frac{(\partial_\beta p_{SM})^2}{p_{SM}}, \quad (49a)$$

$$g_{hh} \equiv \frac{1}{4} \sum_S d_S \sum_M \frac{(\partial_h p_{SM})^2}{p_{SM}}, \quad (49b)$$

$$g_{h\beta} \equiv \frac{1}{4} \sum_S d_S \sum_M \frac{\partial_\beta p_{SM} \partial_h p_{SM}}{p_{SM}}, \quad (49c)$$

and, furthermore,  $g_{\beta h} = g_{h\beta}$ . Inserting (48a) and (48b) into the above equations, we find the metric components to be given by equilibrium fluctuations and correlations,

$$g_{\beta\beta} = \frac{1}{4}(\langle \mathcal{H}_{\text{LMG}}^{\text{iso}^2} \rangle - \langle \mathcal{H}_{\text{LMG}}^{\text{iso}} \rangle^2), \quad (50a)$$

$$g_{hh} = \beta^2(\langle S_z^2 \rangle - \langle S_z \rangle^2), \quad (50b)$$

$$g_{h\beta} = -\frac{\beta}{2}(\langle \mathcal{H}_{\text{LMG}}^{\text{iso}} S_z \rangle - \langle \mathcal{H}_{\text{LMG}}^{\text{iso}} \rangle \langle S_z \rangle). \quad (50c)$$

Analogous results have been derived in [24] for the case of a quantum Ising spin chain. Since  $\mathcal{H}_{\text{LMG}}^{\text{iso}}$  contains only commuting operators, the connected correlation functions on the right-hand sides of (50a)–(50c) can, up to some pre-factors, be expressed as derivatives of the free energy (38), yielding

$$g_{\beta\beta} = -\frac{N}{4} \partial_{\beta}^2(\beta f), \quad (51a)$$

$$g_{hh} = -\frac{N\beta}{4} \partial_h^2 f, \quad (51b)$$

$$g_{h\beta} = -\frac{N\beta}{4} \partial_h \partial_{\beta} f. \quad (51c)$$

Note that these expressions suggest a close relationship with Ruppeiner geometry [10], where a Riemannian metric is *defined* in terms of derivatives of a suitable thermodynamic potential, e.g. the free energy. In the case of a vanishing non-classical part  $g^{\text{nc}}$ , the Bures metric for thermal states and the Ruppeiner metric indeed differ just by a coordinate transformation.

The exact result for the free energy per spin (38) and the self-consistency condition (40) can now be used to compute the metric per spin in the thermodynamic limit,  $g^{(\infty)} \equiv \lim_{N \rightarrow \infty} \frac{1}{N} g$ . One would expect from equations (51a)–(51c) that, in this limit, the metric inherits a nonanalytic behaviour from the nonanalyticity of the free energy  $f$ , but we will see in the following that the situation is even a bit more involved.

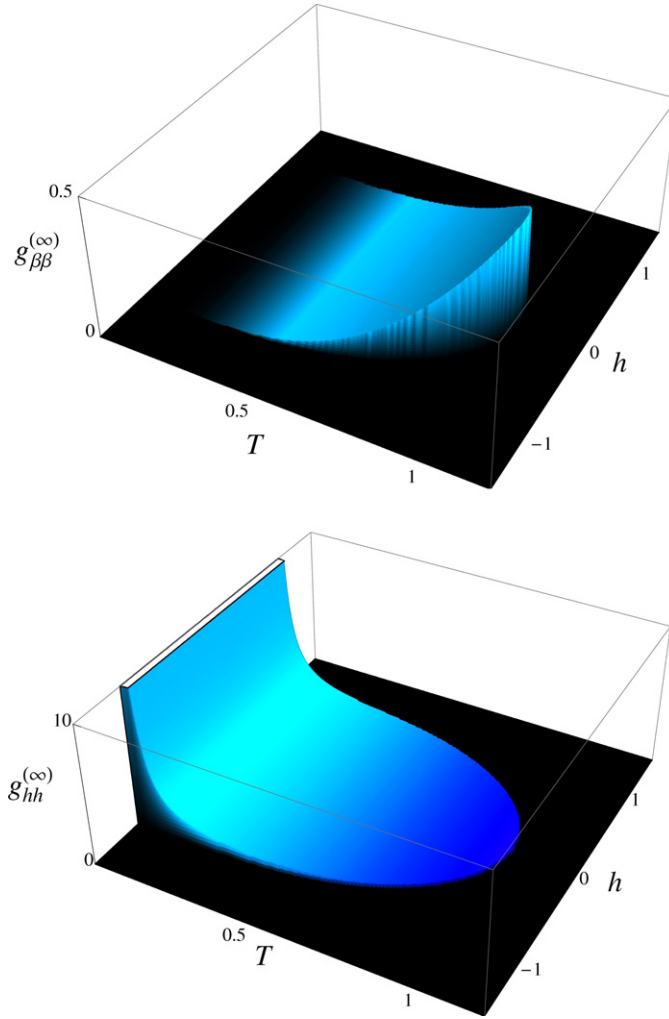
### 5.1. Ordered phase

For the ordered phase with  $\mu_{xy} \neq 0$  we can collect the metric components in the form of a diagonal matrix,

$$\begin{pmatrix} g_{\beta\beta}^{(\infty)} & g_{\beta h}^{(\infty)} \\ g_{h\beta}^{(\infty)} & g_{hh}^{(\infty)} \end{pmatrix} = \frac{1}{4} \begin{pmatrix} \frac{(\mu_{xy}^2 + h^2)(1 + \mu_{xy}^2 + h^2)}{1 - \beta[1 - (\mu_{xy}^2 + h^2)]} & 0 \\ 0 & \beta \end{pmatrix}. \quad (52)$$

Equation (52) provides the components of a well-defined Riemannian metric, and we can now interpret the metric components as indicators of how well thermal states with close-by values of  $\beta$  and  $h$  can be distinguished. The graphs of  $g_{\beta\beta}^{(\infty)}$  and  $g_{hh}^{(\infty)}$  in the  $(T, h)$ -plane are shown in figure 2.

Instead of considering the metric components separately, one can combine them to compute the Ricci scalar, a quantity characterizing the curvature of a manifold. We have

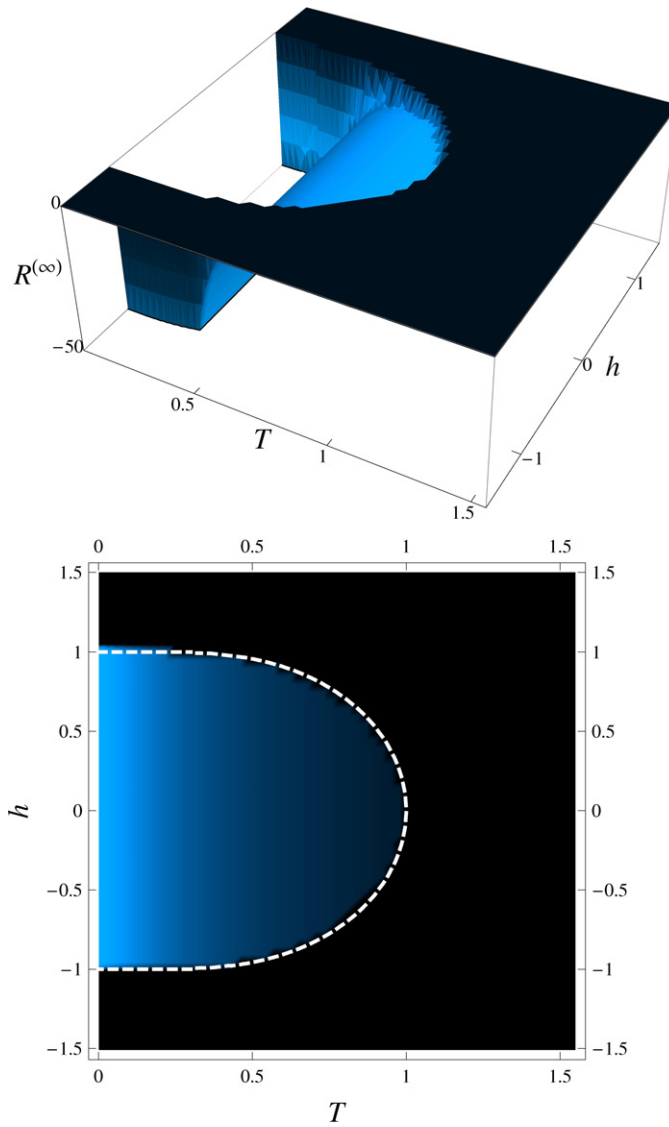


**Figure 2.** Components  $g_{\beta\beta}^{(\infty)}$  and  $g_{hh}^{(\infty)}$  of the metric in the thermodynamic limit as functions of temperature  $T$  and external magnetic field  $h$ . When approaching the phase boundary,  $g_{\beta\beta}^{(\infty)}$  increases, suggesting enhanced distinguishability under variations of temperature. From the divergence of  $g_{hh}^{(\infty)}$  at  $T = 0$  one can see that the Bures metric is not well defined for the ground state in the thermodynamic limit (nor is it well defined for finite systems at  $T = 0$ ).

computed the Ricci scalar by making use of the Maurer–Cartan [29] equations. Here, we skip the details of this calculation and present only the final result in the thermodynamic limit:

$$\mathcal{R}^{(\infty)} = \frac{2}{PQ} \left( \frac{(\partial_\beta P)(\partial_h Q)}{Q^2} - \frac{\partial_\beta^2 P}{Q} - \frac{\partial_h^2 Q}{P} \right), \tag{53}$$

where  $P = \sqrt{\beta}/2$  and  $Q = \sqrt{\mu_{xy}\partial_\beta\mu_{xy}}/2$ . The graph of  $\mathcal{R}^{(\infty)}$  is shown in figure 3. We observe that  $\mathcal{R}^{(\infty)}$  is negative in the entire ordered phase. In [24], it was conjectured that a negative Ricci scalar should correspond to the ‘classical realm’ of a given system. Since the Hamiltonian of the isotropic LMG model contains only mutually commuting terms, it may



**Figure 3.** Ricci scalar  $\mathcal{R}^{(\infty)}$  of the isotropic LMG model in the thermodynamic limit as functions of temperature  $T$  and external magnetic field  $h$ . As for the metric components shown in figure 2,  $\mathcal{R}^{(\infty)}$  is well defined only for the ferromagnetically ordered phase, and the breakdown of its existence can be interpreted as a signal of the phase transition. Note that, where defined,  $\mathcal{R}^{(\infty)}$  is negative, suggesting a classical-type behaviour of the system.

be regarded as classical, and the negative Ricci scalar we observe is in agreement with the conjecture.

### 5.2. Paramagnetic phase

Surprisingly at first sight, the metric not only becomes singular at the phase boundary, but changes its structure entirely from one phase to the other. Writing the rescaled metric tensor in matrix form,

$$\begin{pmatrix} g_{\beta\beta}^{(\infty)} & g_{\beta h}^{(\infty)} \\ g_{h\beta}^{(\infty)} & g_{hh}^{(\infty)} \end{pmatrix} = \frac{1}{4} (\cosh(\beta h))^{-2} \begin{pmatrix} h^2 & h\beta \\ h\beta & \beta^2 \end{pmatrix}, \quad (54)$$

we find that in the disordered phase with  $\mu_{xy} = 0$ , the matrix of the metric components has vanishing determinant. This in turn implies that in the disordered phase the rank-two tensor becomes degenerate and is not a proper Riemannian metric anymore. Since we started out with a Riemannian metric in the finite-system case, the limit  $N \rightarrow \infty$  must have destroyed this property.

One can understand the physical origin of this effect by considering expression (38) for the free energy of the LMG model: for vanishing in-plane magnetization  $\mu_{xy} = 0$ , the free energy is identical to that of a spin system coupled to an external field  $h$ , but without any spin–spin interaction whatsoever. Such a system is governed by the Zeeman–Hamiltonian  $\mathcal{H} = -hS_z$ , and the corresponding thermal state is given by  $\rho = \mathcal{Z}^{-1} \exp(\beta h S_z)$  with the partition function  $\mathcal{Z} = \text{tr} \exp(\beta h S_z)$ . For this system, all  $(\beta, h)$  with  $\beta h = \text{const.}$  parametrize the same density operator. The very same situation occurs also for the paramagnetic phase with  $\mu_{xy} = 0$  of the LMG model in the thermodynamic limit, leading to the mentioned degeneracy of the matrix of the metric components. As a consequence, thermal states of this phase should be parametrized by only a single parameter, namely the reduced field  $\bar{h} \equiv \beta h$ . The corresponding metric on such a one-dimensional manifold can be obtained by a computation similar to the two-dimensional case reported above, yielding

$$g^{(\infty)} = (4 \cosh \bar{h})^{-1} d\bar{h} \otimes d\bar{h}. \quad (55)$$

## 6. Fubini–Study limit

We have mentioned at the end of section 3 that the Bures metric reduces to the Fubini–Study metric when considering pure states. This should in principle allow us to define a Fubini–Study metric on the ground-state manifold parametrized by a ground-state mapping  $h \mapsto |\psi_{GS}\rangle$ . However, we have observed in section 4 that the ground state of the isotropic LMG model is the angular momentum eigenstate  $|N/2, M_0(h)\rangle$  where, according to equation (36),  $M_0(h)$  is selected by the rounding function  $\mathcal{I}$ . As a consequence, no differentiable parametrization of the ground state exists. Since this property naturally carries over to the respective chart mapping, the Fubini–Study metric on the ground-state manifold of the isotropic LMG model in the finite system is not well defined. Similar issues, related to ground-state level crossings and their effect on the fidelity, are also discussed in [28].

In order to investigate the ground-state behaviour in the infinite system, we can alternatively study the limit  $T \rightarrow 0$  of the Riemannian metric characterized by (52). The component  $g_{\beta\beta}^{(\infty)}$  is found to vanish in this limit, in agreement with the fact that, according to equation (50a), it is proportional to the specific heat. The component  $g_{hh}^{(\infty)}$ , however, diverges for  $T \rightarrow 0$  asymptotically as  $T^{-1}$ . Hence the (rescaled) ground-state metric is not well defined in this limit, although the ground-state energy becomes a continuous function of the external field  $h$  in the thermodynamic limit.

## 7. Remarks on the anisotropic case

The problems we encountered in the previous section when trying to compute a metric on the ground-state manifold of the isotropic LMG model can be traced back to the fact that the Hamiltonian consists only of mutually commuting terms, which in turn allows for level

crossings. For the anisotropic case, in contrast, we would expect a well-defined ground-state metric. Exact results for the spectrum and eigenvalues exist also for the anisotropic LMG model [30, 31]. In principle, these results would allow one to compute the metric on the manifold of thermal states, but unfortunately they are expressed as rather complicated multiple sums, with coefficients given as solutions of differential equations, which makes the calculation quite difficult in practice. A more accessible result is given in [32, 33] for the energy spectrum of this model in the thermodynamic limit but, as far as we can see, this might not be sufficient for a computation of the fidelity metric.

Alternatively, one might try to compute the metric in mean-field approximation. Knowing that, in the thermodynamic limit, the mean-field solution of the (isotropic or anisotropic) LMG model coincides with the exact solution, one might hope to obtain the exact metric from a mean-field calculation as well. Unfortunately this is not the case, nor are we aware of any other approximation that retains enough of the original quantum state space structure in order to deliver an accurate description of the underlying geometry.

In contrast to the isotropic LMG model where only the classical part (44) was found to contribute to the metric, we expect the anisotropic case to have a non-zero non-classical contribution (45). Furthermore, it will not anymore be possible to completely express the metric in terms of derivatives of the free energy, and only then the characterization of phase transitions by means of the fidelity metric would really go beyond a thermodynamic description.

## 8. Conclusions

In this paper we have followed the idea that a suitable metric on the quantum state space can be used to identify and characterize both classical and quantum phase transitions. We have reviewed how such a fidelity metric is constructed, either on the space of pure states  $\mathcal{P}(\mathcal{H})$  or on the space of state operators  $\mathcal{M}$ . From the Bures metric, i.e. the fidelity metric on  $\mathcal{M}$ , the metric tensor field on the submanifold of thermal states has been derived. As an application of these concepts, we studied the LMG model of spin-1/2 degrees of freedom sitting on the vertices of a fully connected graph. The choice of this model was mainly motivated by the fact that its thermodynamics is particularly simple to solve, and exact results are available for the free energy per spin in the thermodynamic limit, both for the isotropic and the anisotropic LMG model.

For the isotropic LMG model, we computed the metric tensor field on the submanifold of thermal states, and we found that all metric components can be written as derivatives of the free energy. This implies a close relation to Ruppeiner geometry, but this should be a peculiarity of models with purely classical contributions to the metric. Another peculiar feature special to the isotropic case is that on the ground-state manifold the metric is not well defined, neither by direct construction from the finite system nor by a detour via thermal states and the subsequent zero-temperature limit. This can be seen as a consequence of level crossings which occur in this case, but are avoided in the anisotropic model.

As expected, we find that the phase transition of the isotropic LMG model occurring at the transition line (41) in the  $(T, h)$ -plane is well captured by the metric components. In a way, this signature is even more pronounced than for other models which had been studied before: not only do the metric components show a singularity or discontinuity, but we also find that, in the thermodynamic limit, the tensor field on the  $(T, h)$ -plane becomes degenerate for the paramagnetic phase and therefore ceases to be a proper Riemannian metric.

It would be worthwhile to compare these results to the corresponding metric of the anisotropic LMG model. Here, we expect the metric to be well defined on the ground-



state manifold, and the non-classical part (45) of the metric to give a non-vanishing contribution.

## Acknowledgments

Most of the work reported was done while DDS and MK were affiliated with the Universität Bayreuth.

## References

- [1] Zanardi P and Paunković N 2006 Ground state overlap and quantum phase transitions *Phys. Rev. E* **74** 031123
- [2] Gu S-J Fidelity approach to quantum phase transitions arXiv:0811.3127
- [3] Zanardi P, Giorda P and Cozzini M 2007 Information-theoretic differential geometry of quantum phase transitions *Phys. Rev. Lett.* **99** 100603
- [4] Zanardi P, Quan H T, Wang X and Sun C P 2007 Mixed-state fidelity and quantum criticality at finite temperature *Phys. Rev. A* **75** 032109
- [5] You W-L, Li Y-W and Gu S-J 2007 Fidelity, dynamic structure factor, and susceptibility in critical phenomena *Phys. Rev. E* **76** 022101
- [6] Wen X G 2004 *Quantum Field Theory of Many-Body Systems* (Oxford: Oxford University Press)
- [7] Garnerone S, Abasto D, Haas S and Zanardi P 2009 Fidelity in topological quantum phases of matter *Phys. Rev. A* **79** 032302
- [8] Abasto D F, Hamma A and Zanardi P 2008 Fidelity analysis of topological quantum phase transitions *Phys. Rev. A* **78** 010301
- [9] Lipkin H J, Meshkov N and Glick A J 1965 Validity of many-body approximation methods for a solvable model: I. Exact solutions and perturbation theory. *Nucl. Phys.* **62** 188–98
- [10] Ruppeiner G 1995 Riemannian geometry in thermodynamic fluctuation theory *Rev. Mod. Phys.* **67** 605–59
- [11] Quan H T and Cucchietti F M 2009 Quantum fidelity and thermal phase transitions *Phys. Rev. E* **79** 031101
- [12] Kwok H-M, Ning W-Q, Gu S-J and Lin H-Q 2008 Quantum criticality of the Lipkin–Meshkov–Glick model in terms of fidelity susceptibility *Phys. Rev. E* **78** 032103
- [13] Kwok H-M, Ho C-S and Gu S-J 2008 Partial-state fidelity and quantum phase transitions induced by continuous level crossing *Phys. Rev. A* **78** 062302
- [14] Ma J, Xu L, Xiong H-N and Wang X 2008 Reduced fidelity susceptibility and its finite-size scaling behaviors in the Lipkin–Meshkov–Glick model *Phys. Rev. E* **78** 051126
- [15] Chruściński D and Jamiolkowski A 2004 *Geometric Phases in Classical and Quantum Mechanics* (Boston, MA: Birkhäuser)
- [16] Ashtekar A and Schilling T A 1999 Geometrical formulation of quantum mechanics *On Einstein’s Path: Essays in Honor of Engelbert Schucking* ed A Harvey (New York: Springer)
- [17] Provost J and Vallee G 1980 Riemannian structure on manifolds of quantum states *Commun. Math. Phys.* **76** 289–301
- [18] Bengtsson I and Życzkowski K 2006 *Geometry of Quantum States: An Introduction to Quantum Entanglement* (Cambridge: Cambridge University Press)
- [19] Uhlmann A 1986 Parallel transport and ‘quantum holonomy’ along density operators *Rep. Math. Phys.* **24** 229–40
- [20] Uhlmann A 1995 Geometric phases and related structures *Rep. Math. Phys.* **36** 461–81
- [21] Dabrowski L and Grosse H 1990 On quantum holonomy for mixed states *Lett. Math. Phys.* **19** 205–10
- [22] Uhlmann A 1989 On Berry phases along mixtures of states *Ann. Phys. (Leipzig)* **501** 63–9
- [23] Hübner M 1992 Explicit computation of the Bures distance for density matrices *Phys. Lett. A* **163** 239–42
- [24] Zanardi P, Venuti L C and Giorda P 2007 Bures metric over thermal state manifolds and quantum criticality *Phys. Rev. A* **76** 062318
- [25] Dusuel S and Vidal J 2005 Continuous unitary transformations and finite-size scaling exponents in the Lipkin–Meshkov–Glick model *Phys. Rev. B* **71** 224420
- [26] Pearce P A and Thompson C J 1975 The anisotropic Heisenberg model in the long-range interaction limit *Commun. Math. Phys.* **41** 191–201
- [27] Sollich P, Nishimori H, Coolen A C C and van der Sijs A J 2000 Exact solution of the infinite-range quantum Mattis model *J. Phys. Soc. Japan* **69** 3200–13

- [28] Paunković N and Rocha Vieira V 2008 Macroscopic distinguishability between quantum states defining different phases of matter: fidelity and the Uhlmann geometric phase *Phys. Rev. E* **77** 011129
- [29] Nakahara M 2003 *Geometry, Topology and Physics* (Bristol: Institute of Physics Publishing)
- [30] Pan F and Draayer J P 1999 Analytical solutions for the LMG model *Phys. Lett. B* **451** 1–10
- [31] Morita H, Ohnishi H, da Providência J and Nishiyama S 2006 Exact solutions for the LMG model Hamiltonian based on the Bethe ansatz *Nucl. Phys. B* **737** 337–50
- [32] Ribeiro P, Vidal J and Mosseri R 2007 Thermodynamical limit of the Lipkin–Meshkov–Glick model *Phys. Rev. Lett.* **99** 050402
- [33] Ribeiro P, Vidal J and Mosseri R 2008 Exact spectrum of the Lipkin–Meshkov–Glick model in the thermodynamic limit and finite-size corrections *Phys. Rev. E* **78** 021106